

LUBING
POULTRYTEC

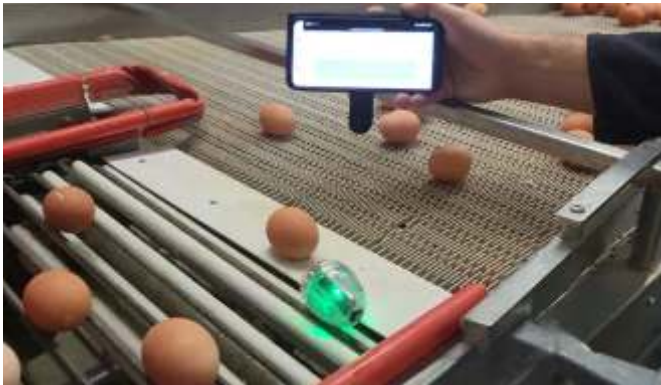


**ELECTRONIC EGG
FOR
CONVEYOR SYSTEMS**



OPTIMIZED PROCESS

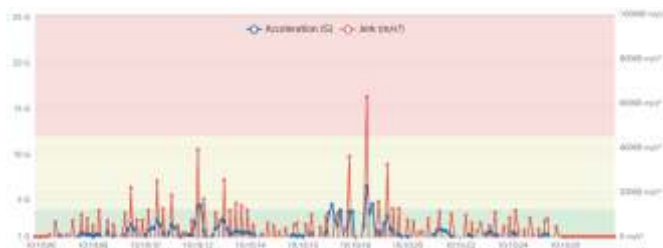
The Electronic Egg detects mechanical shocks in real time and logs the data. This allows users to quickly identify and rectify problems in Conveyor- and Sorting-Systems. The Electronic Egg improves the efficiency of the Conveyor-System, reduces egg losses, and ensures optimal transport.



Place the Electronic Egg next to the eggs on the Conveyor-System. During transport, it detects and logs mechanical shocks. If specified limits are exceeded, the LED indicators light up accordingly.

WIRELESS DATA LOGGING & ANALYSIS

- » Records mechanical shocks in three dimensions
- » The data is stored for later analysis
- » The integrated web server allows easy access via WiFi—no software installation required
- » View data on iOS, Android, or Windows devices using any web browser
- » Export logs as PDF or CSV files for easy reporting



➤ ADVANTAGES

- » Intuitive visualization: LED signals (green-yellow-red) for immediate impact detection
- » Real-time monitoring: Detects shocks, vibrations, rotations, and inclinations
- » Efficiency insights: Data-driven insights to increase efficiency
- » Impact on profitability: Potential savings of up to €240,000 per year for a farm with 500,000 chickens by reducing the breakage rate by 1%

LUBING
POULTRYTEC

LUBING Maschinenfabrik GmbH & Co. KG
Lubingstraße 6 | 49406 Barnstorf
Germany

T +49 (0) 54 42 98 79 - 0
F +49 (0) 54 42 98 79 - 33
M info@lubing.de

LUBING.COM

As of: May 2026 | We reserve the right to make technical changes, further developments and improvements.
No. 0896-1