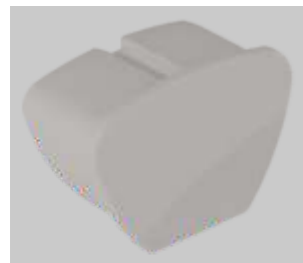
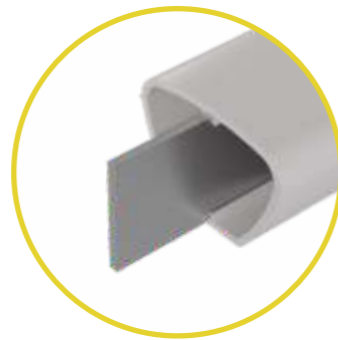


➤ ADVANTAGES

- » Meets the implementation instructions “Design and requirements for the perch shape” of the Animal Welfare and Livestock Husbandry Ordinance. (§13 Paragraph 5 No.6)
- » Tested at the Friedrich Löffler Institute (FLI) with a focus on safe footing and balance movements while resting on the bar. (EFSA, 2023; Pickel et al., 2010)
- » Thanks to the generous and slightly rounded surface in the upper area, the balls of the feet are evenly loaded, so that problems with the feet are ruled out. The perch has an optimal tread width of 42 mm and a specially designed circumference of 118 mm.
- » A physiological resting position is ensured so that the toes can reach around the bar and find good support.
- » Specially developed contour allows the hens to rest “undisturbed” and walk safely, as the balls of their feet can rest fully on the perch.
- » Long bridges can be solved with a metal strip. The integrated insertion grooves at the top and bottom of the perch serve this purpose.



**HYGIENIC
+ ERGO-
NOMIC**



LUBING

POULTRYTEC



LUBING

POULTRYTEC

LUBING Maschinenfabrik GmbH & Co. KG
Lubingstraße 6 | 49406 Barnstorf
Germany

T +49 (0) 54 42 98 79 - 0
F +49 (0) 54 42 98 79 - 33
M info@lubing.de

[LUBING.COM](https://www.lubing.com)

As of: May 2026 | We reserve the right to make technical changes, further developments and improvements.
No. 0867-1

BIO-BROILER PERCH SYSTEM FOR FLOOR REARING AND PERCH SYSTEM FOR LAYERS

meets the design instructions for the perch shape

BIO-BROILER PERCH SYSTEM

FOR FLOOR REARING

The new Bio-Broiler perch system for floor rearing has an excellent seating comfort thanks to its specially rounded profile and is also self-cleaning. Due to its ergonomic shape and height, it can be used for all age groups in broiler floor rearing. The contour of the broiler perch system developed here ensures a secure stand and less stress, as well as reduced injuries and animal losses, which contributes to „animal welfare“. The perch has a height of 100 mm and a standard length of 4,600 mm. There are eyelets on the end caps and couplings of the perch for a rope attachment, for pulling the system up when cleaning the stable. The maximum recommended distance between the rope eyelets for support is 1.5 metres.



Long joints can be reinforced with a metal strip. The integrated slots on the top and bottom of the perch are designed for this purpose.

➤ ADVANTAGES

- » Meets the implementation instructions "Design and requirements for the perch shape" of the Animal Welfare and Livestock Husbandry Ordinance. (§13 Paragraph 5 No.6)
- » The generous and slightly rounded surface in the upper area means that the balls of the feet are evenly loaded, minimizing foot problems. The perch has an optimal tread width of 42 mm and a specially designed circumference of 118 mm.
- » A physiological resting position is ensured so that the foot finds optimal support on the perch.
- » The highly impact-resistant and UV-stabilized PVC material ensures that the perch cannot splinter and is shatterproof.



PERCH SYSTEM FOR LAYERS

SYSTEMATIC STABLE CONSTRUCTION WITH TESTED QUALITY

The new perch system for Layers offers excellent seating comfort thanks to its ergonomic contour. Due to the special shape, the perch cleans itself. The anti-slip bars on the sides allow animals to fly safely without getting injured. The perch can be extended as desired using very stable couplings. Furthermore, end caps ensure that the perch can be closed hygienically. The high-impact and UV-stabilized PVC material ensures that the perch cannot splinter and is unbreakable.

