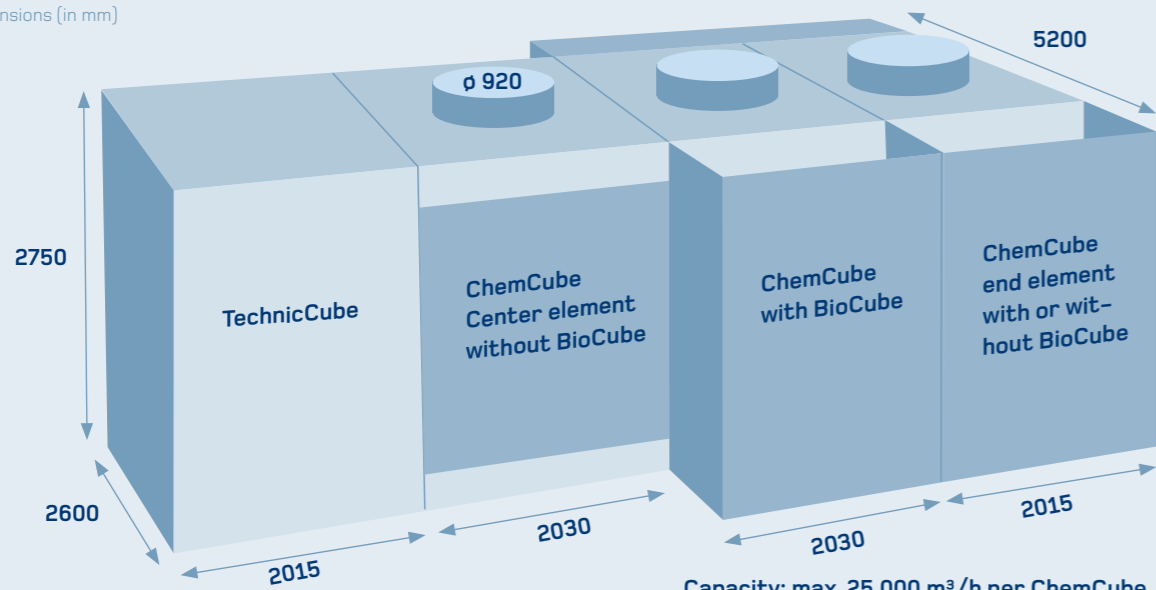


## TECHNICAL DATA

Dimensions (in mm)



Capacity: max. 25,000 m<sup>3</sup>/h per ChemCube  
 1 TechnicCube can supply 8 ChemCubes, thus  
 max. capacity: 200,000 m<sup>3</sup>/h per system

### Required components

- TechnicCube
- ChemCube middle elements as required up to max. 7 pieces (with or without BioCube)
- ChemCube end element (with or without BioCube)
- Sulfuric acid
- Cracked root wood

### Technical requirements

- Fresh water supply
- Power supply 400 V / 50 Hz
- Blowdown water tank
- Solid and level ground

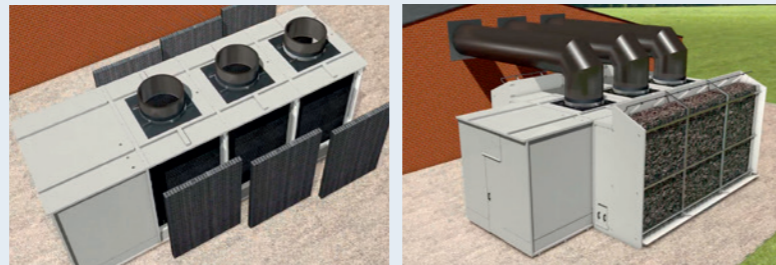
### Note!

Regular cleaning intervals are required!

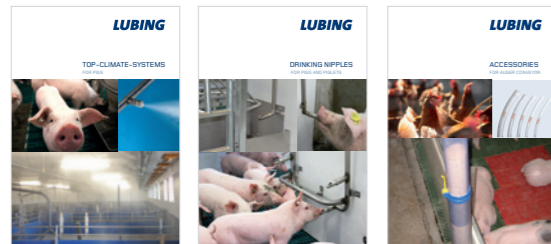
**We would be pleased to assist you with your planning and layout and to provide you with a non-binding offer.**

## EXECUTION

The plant is delivered in prefabricated individual parts. This results in a very low transport volume, so that no heavy transport is required. All necessary welding seams are already set, so that the CleaningCubes can be assembled on site by simply plugging and screwing them together. A large part of the work can also be done by the customer, if desired.



## SUITABLE COMPLEMENT



TOP-Climate-Systems for pigs

Drinking Nipples for pigs and piglets

Accessories for auger conveyor

# LUBING

LUBING Maschinenfabrik GmbH & Co. KG

Lubingstraße 6 · 49406 Barnstorf

+49(0)54 42 - 9879-0

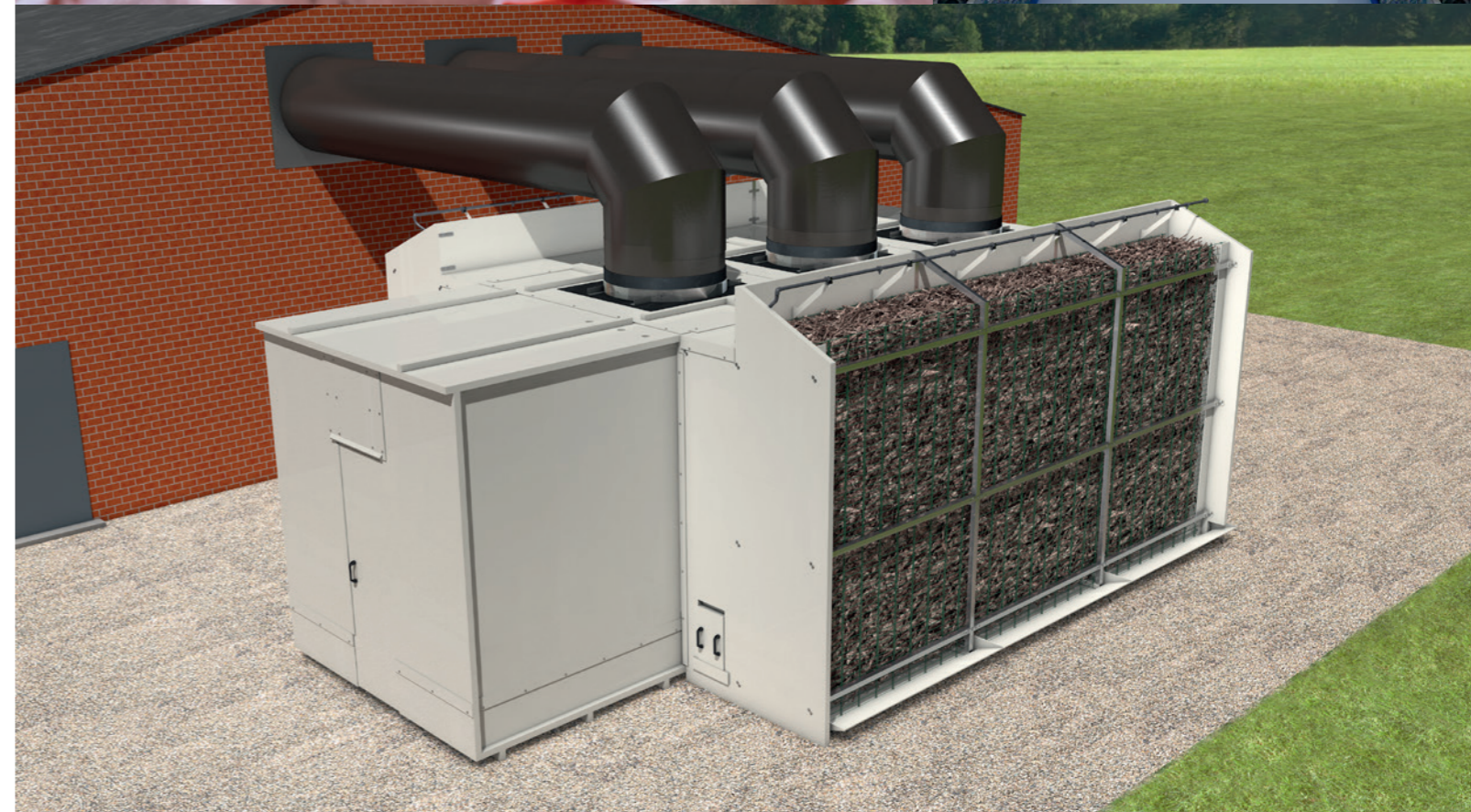
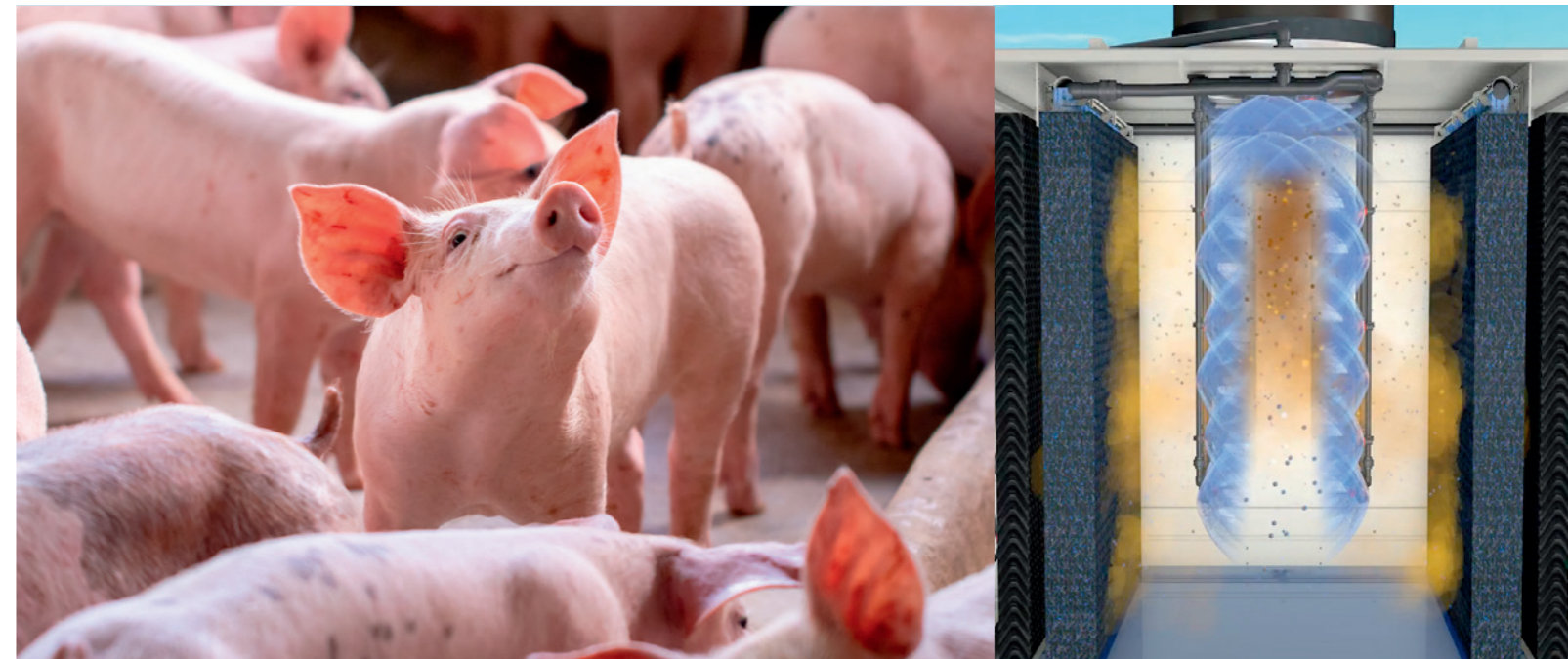
+49(0)54 42 - 9879-33

www.lubing.com · info@lubing.com



# LUBING

## LUBING CLEANINGCUBES WASTE AIR PURIFICATION FOR PIGSTIES



# LUBING CLEANINGCUBES WASTE AIR PURIFICATION FOR PIGSTIES

The LUBING CleaningCubes are a modular two-stage system for waste air purification for pigsties. The optional downstream biological stage is responsible for odor reduction and is always fully operational to allow uniform growth of the biology.

## The process

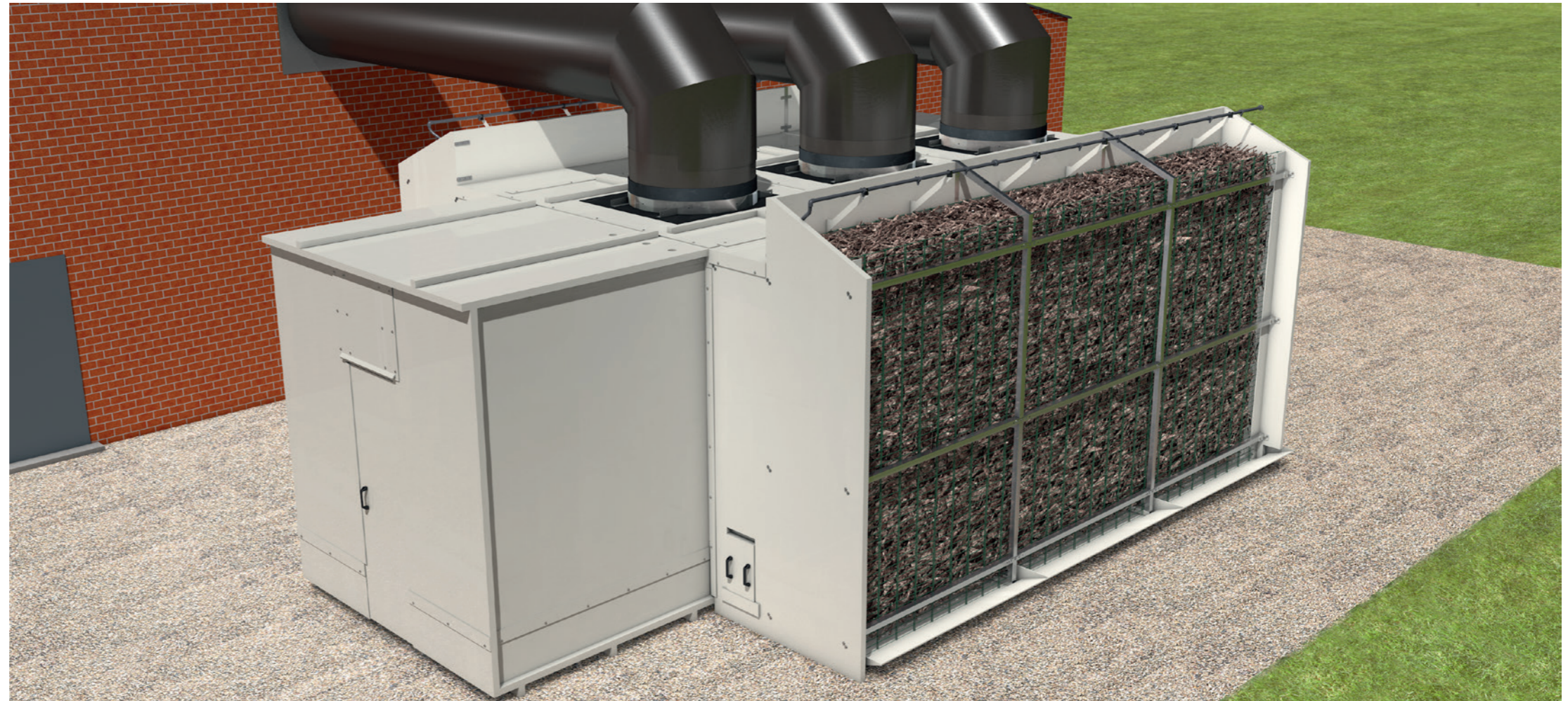
In the LUBING CleaningCubes, each exhaust fan is followed by its own ChemCube to wash dust and ammonia from the exhaust air. For this purpose, acidic washing water (pH 3) is sprayed as soon as the air enters the ChemCube in order to utilize the entire available space with correspondingly long contact times.

This is followed by washing over a 20 cm thick plastic pad. A droplet separator removes entrained droplets from the air.

The ChemCubes can be operated in pairs with a large pump or supplied separately with a smaller pump.

The BioCube, which is optionally placed afterwards, provides efficient odor reduction with root wood that is gentle on operating costs. To ensure uniform growth of the biology, all BioCubes are linked to each other so that the entire root wood wall is always supplied with air.

LUBING CleaningCubes can be used both in new buildings and as a retrofit in existing houses.



## ADVANTAGES

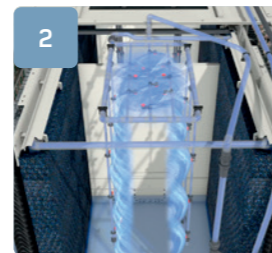
### OF THE LUBING WASTE AIR PURIFICATION

- Smallest size possible due to two outlet surfaces.
- Number of Cubes used can be adapted to the needs of the house size.
- Thanks to chemical stage only very little blow-down water.
- Supplied in prefabricated individual parts.
- Also suitable for partial exhaust air treatment.
- Optional BioCubes for odor reduction.



#### 1 TechniCube

- supplies up to eight CleaningCubes



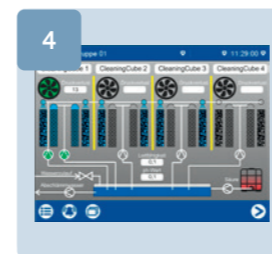
#### 2 ChemCube

- one ChemCube cleans up to 25,000 m³/h of exhaust air from ammonia and dust
- spraying of the washing water in the ChemCube for optimum cleaning performance



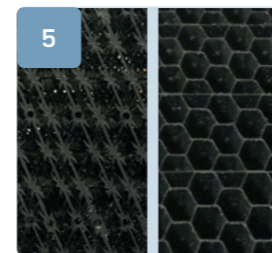
#### 3 BioCube

- optional for additional reduction of odors
- coupled root wood wall elements
- constant aeration for optimal bio-growth



#### 4 Control

- regulates functions and takes over all controls fully automatically



#### 5 Pad and droplet separator

- effective cleaning in smallest space
- combination of 1st pad (left) and 2nd mist eliminator



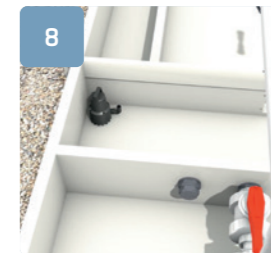
#### 6 Root wood in the BioCube

- ideal breeding ground for bacterial degradation of the odorous particles
- torn pieces for maximum surface area and intensive effect



#### 7 Wash water

- the acid wash water is produced by adding sulfuric acid
- delivery in practical IBCs



#### 8 Blowdown water

- used wash water is pumped into a collection tank
- can be used as organic fertilizer

# LUBING

Further information under [WWW.LUBING.COM](http://WWW.LUBING.COM)